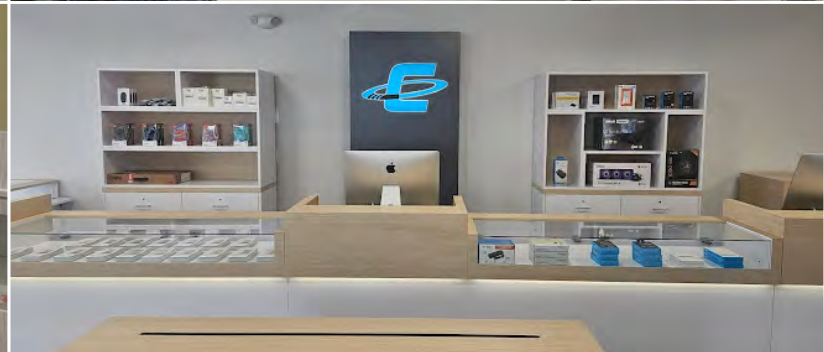
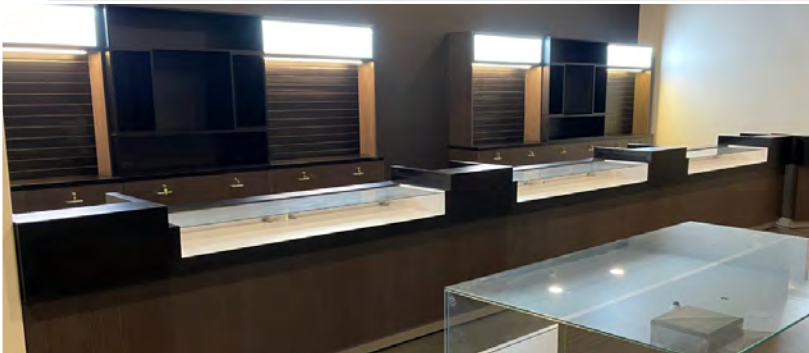




TURN-KEY RETAIL SOLUTIONS FOR THE CANNABIS INDUSTRY



PRE-ENGINEERED FOR A FASTER DELIVERY AND LOWER COST
WITH CUSTOM FINISHES TO PERSONALIZE YOUR STORE SPACE

586-772-4225

www.palmerretailsolutions.com



Create your own custom dispensary look. We make it quick, easy and inexpensive.

Palmer Retail Solutions produces a number of modular, customizable, pre-engineered, all inclusive, turn-key store fixture solutions for the cannabis industry. These attractive, flexible components are all designed with the intent of saving retailers big money and time when opening dispensaries and other cannabis related businesses.

Explore our catalog and just imagine the various ways to make a store unique by combining the various fixtures and color treatments shown throughout. We're happy to work with you to create that perfect store.



Index ---

Order Process	5
Sample Store Layouts	6-8
POS Sales Counters	9-14
Perimeter Displays	17-21
Floor Displays	21-24
Check-in Counters	25
Accessories	26

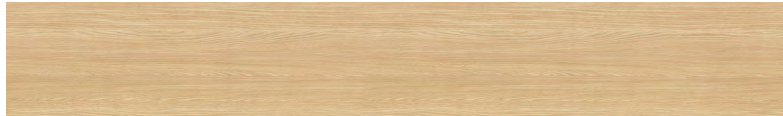


LAMINATE COLOR OPTIONS

All fixtures may be ordered in white, black, or any of the following finishes. If you have a specific finish in mind than any shown here, we are happy to work with you. Keep in mind however this may affect price and timing.



BLONDE CEDAR



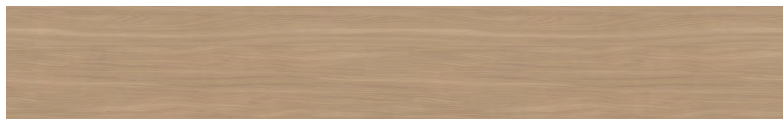
NATURAL ASH



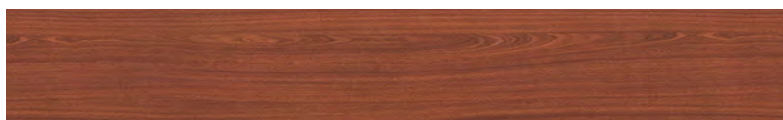
WEDDING CAKE



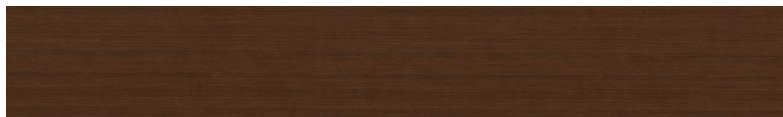
BLEACHED LEGNO



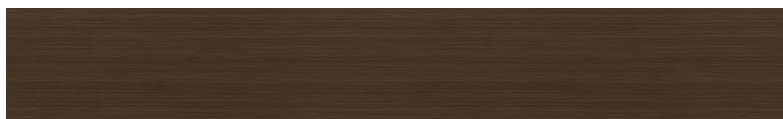
BEIGE ELM



REGENCY MAHOGANY



CHESTNUT WOODLINE



WALNUT RIFTWOOD



BLACK RIFTWOOD

Explanation of Order Process

Palmer offers a free of charge design service. We work with you to determine your specific needs and desires for your space. Send us your store dimensions and our designers will lay out your fixture choices in a 3D setting for your review. This will include multiple 3D views to help you visual the finished space.

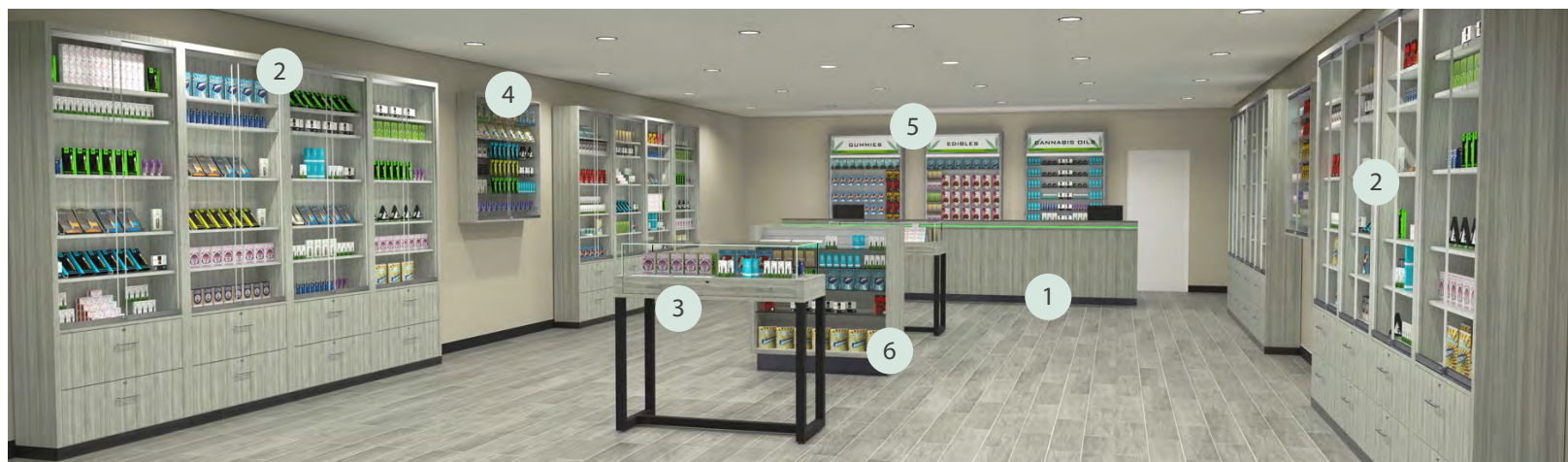
We will also revise the design based on your feedback. From there we can generate an itemize quote and production timing estimate. Once approved production can begin with the receipt of your deposit. Upon completion of production we can arrange for 3rd party delivery of your fixtures.



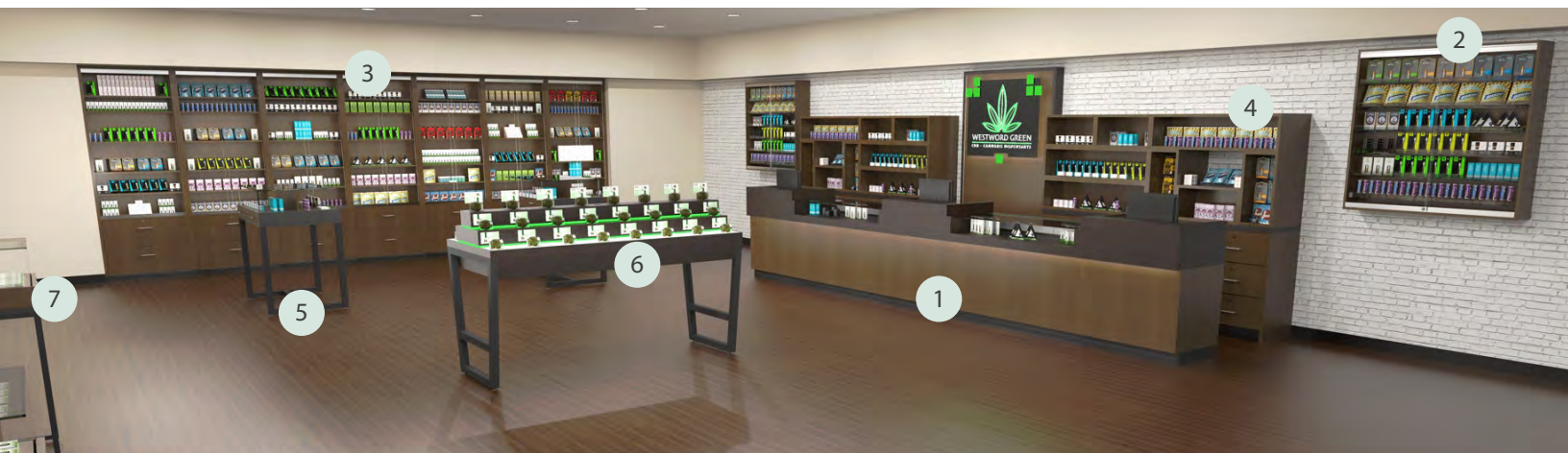
EXAMPLE STORE LAYOUTS



Example depicts: 1 Jumbo register stand counter set, 2 Secure slat wall unit, 3 Modular wall units, 4 Gondola floor displays, 5 Tall slat wall display, 6 Two-sided glass tables



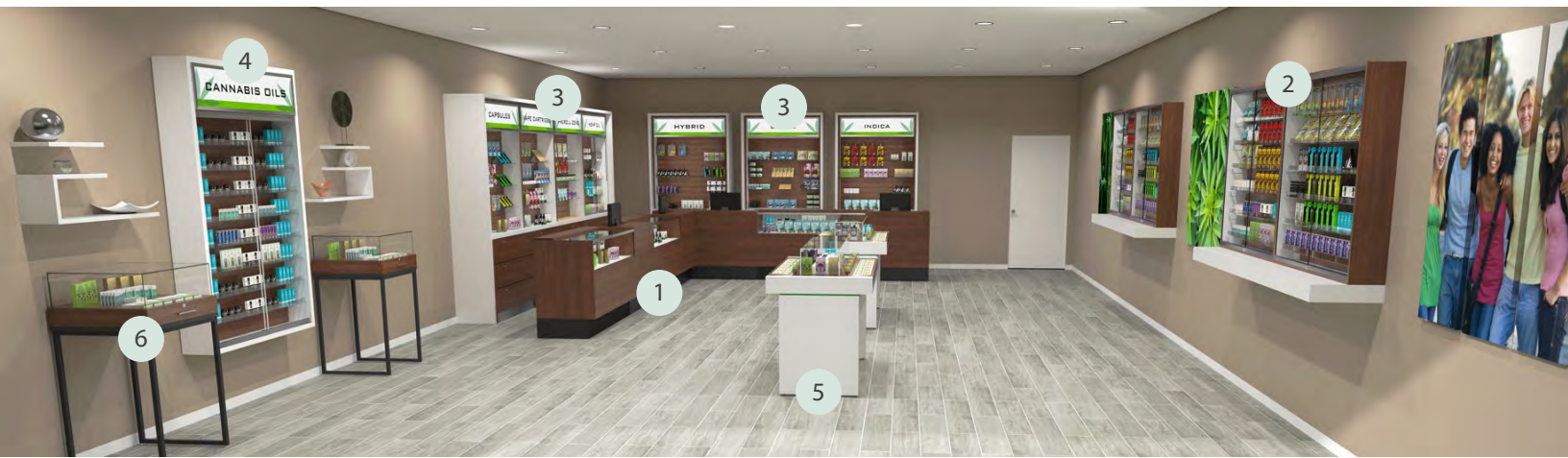
Example depicts: 1 Jumbo register stand counter set, 2 Lighted modular wall showcases, 3 Single-sided glass tables, 4 Secure slat wall unit, 5 Tall slat wall display, 6 Gondola floor display



Example depicts: 1 Overhang transaction counter set, 2 Secure slat wall unit, 3 Lighted modular wall showcases, 4 Display credenzas w/ upper box shelves, 5 Two-sided glass table, 6 Three-tier display table, 7 Small glass top display



EXAMPLE STORE LAYOUTS



Example depicts: 1 Streamline transaction counter set, 2 Secure slat wall unit with: 3 Display credenzas w/ upper hutch, 4 Tall slat wall display, 5 Glass top display table, 6 Small glass top display



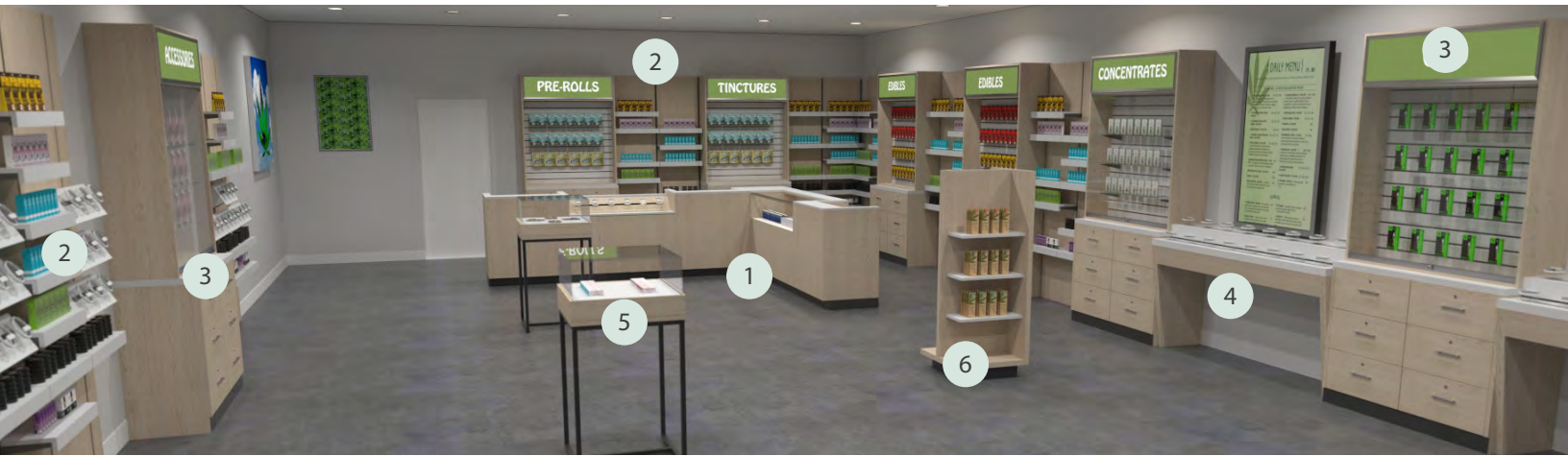
Example depicts: 1 Overhang transaction counter set, 2 Secure slat wall unit with:, 3 Lighted modular wall showcases, 4 Display credenzas w/ upper box shelves, 5 Glass top display table, 6 Small glass top display, 7 Display credenzas w/ upper hutch



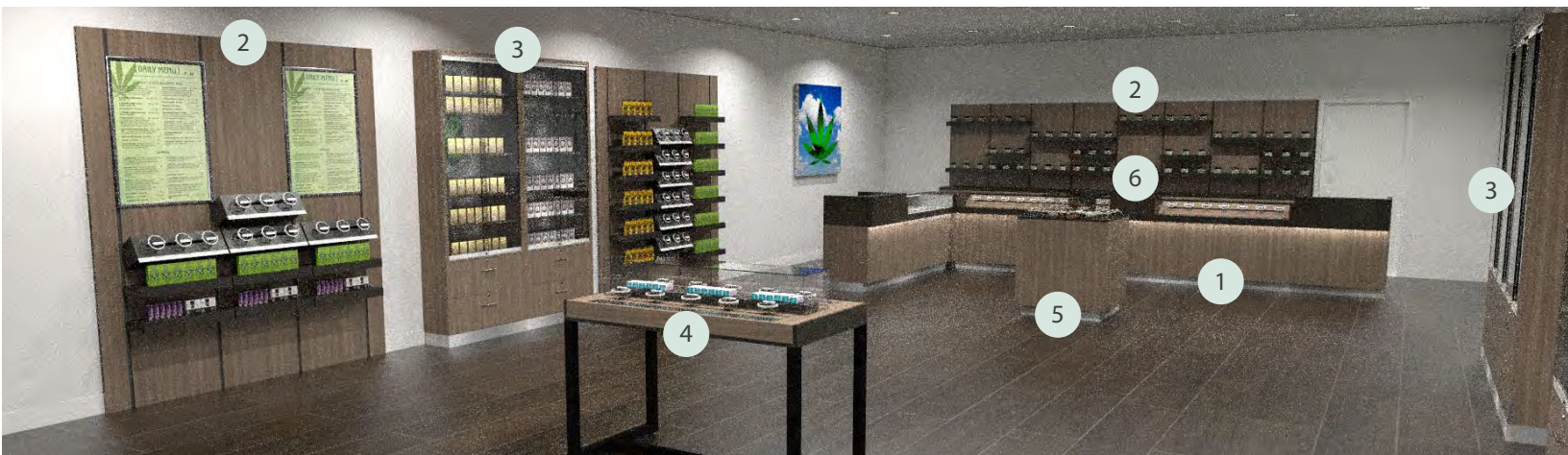
Example depicts: 1 Streamline transaction counter set, 2 Secure slat wall unit with, 3 Display credenzas w/ upper hutch, 4 Tall slat wall display, 5 Small glass top display, 6 Two-sided glass tables, 7 Three-tier display table



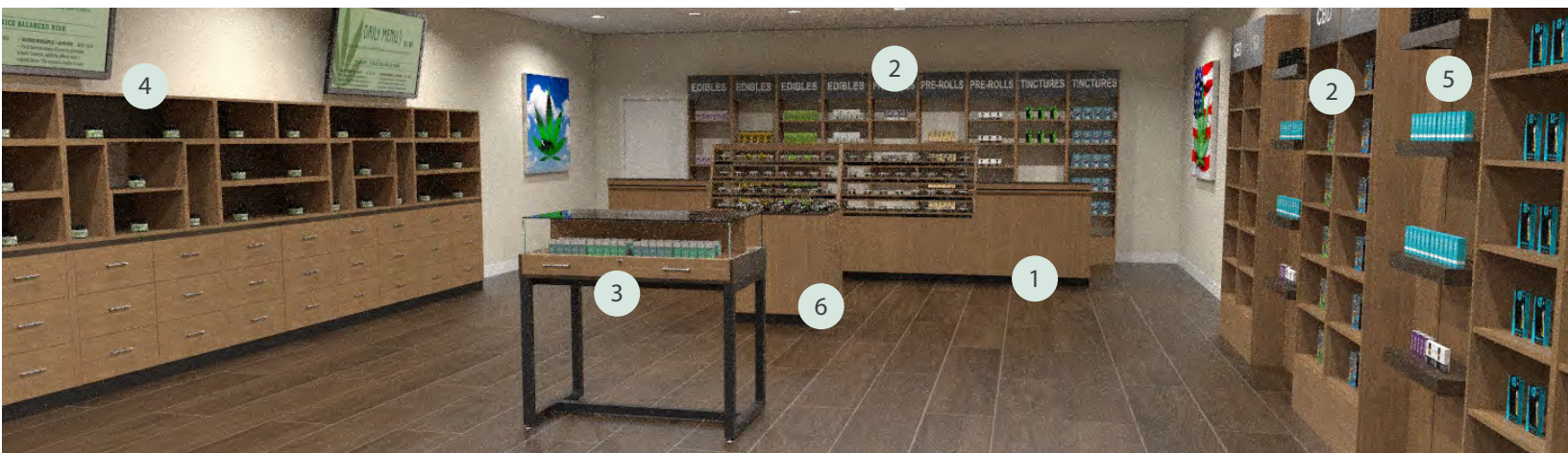
EXAMPLE STORE LAYOUTS



Example depicts: 1 Streamline transaction counter set, 2 Modular standard wall, 3 Display credenzas w/ upper hutch, 4 Two tier display table, 5 Small glass top display table, 6 Impulse floor display



Example depicts: 1 Overhang transaction counter set, 2 Modular standard wall, 3 Lighted modular wall showcases, 4 Glass top display, 5 Central display table, 6 Display credenzas



Example depicts: 1 Jumbo register stand counter set, 2 Modular wall unit, 3 Two-sided glass tables, 4 Display credenza w/ upper box shelves, 5 Modular standard wall, 6 Central display table





Overhang Transaction Counters

Create a POS transaction counter set which fills your space with the look you want. Each easy to install modular cabinet arrives fully assembled.

The Overhang POS design features unique front plane down light illumination. Glass top display cases with locking storage have a fixed internal shelf. Register stands have a pull-out drawer with adjustable shelf locking storage below.

Fixtures come in a range of pre-selected colors, including the ability to create a two-tone look. Custom color combinations are available on request.



Example Configuration (Customer Side)

Laminate colors shown:
Chestnut Woodline, Bleached Legno



Example Configuration (Service Side)



Register Stand

FDCAN100

\$1,365

36"w x 42"h x 24"d

POS register stand with extended counter shield and cabinet front downlight illumination has a 36" high worksurface. Includes a locking drawer and locking storage area in the base with one adjustable shelf.



Inline Display Case

FDCAN101

\$1,819

60"w x 38"h x 24"d

This storage and display case features the same downlighting as the matching POS.

The upper 9" of the fixture is front and top view display, accessible from behind the sales counter. The lower portion is dedicated storage.



Corner Storage Unit

FDCAN102

\$525

24"w x 38"h x 24"d

Corner cabinet includes access for storage.

Laminate colors shown:
Black Riftwood, Regency Mahogany



Streamline Transaction Counters

Create a POS set which fills your space with the look you want. Each easy install modular cabinet arrives fully assembled and ready to be connected together.

This transaction counter set optimizes POS and display space with a streamlined look. 24" deep counters can be paired in any configuration to fit your floor space.

Fixtures come in a range of preselected colors. Custom color combinations are available on request.



Example Configuration (Customer Side)



Example Configuration (Service Side)

Laminate color shown:
Regency Mahogany



Register Stand

FDCAN103

\$1,077

36"w x 40"h x 24"d

POS register stand includes a locking drawer and locking storage area in the base with one adjustable shelf.



Inline Display Case

FDCAN104

\$1,445

64"w x 40"h x 24"d

Upper display case with storage below. Accessible via lockable sliding doors on employee side of counter.



Corner Storage Unit

FDCAN105

\$525

24"w x 40"h x 24"d

Corner cabinet includes access for storage.

Laminate color shown:
Wedding Cake

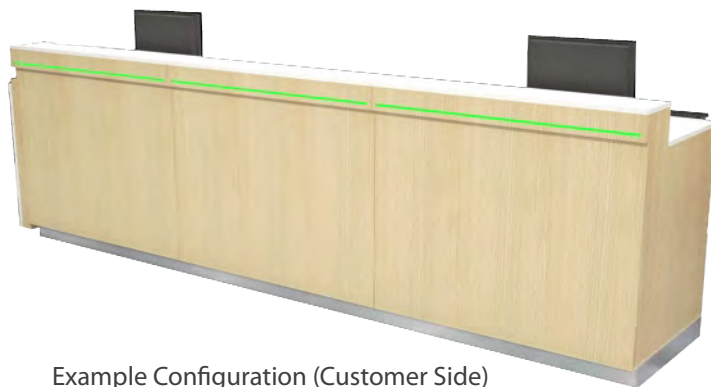


All-In One Transaction Counters

Create a POS set which fills your space with the look you want. Each easy install modular cabinet arrives fully assembled.

This transaction counter set optimizes POS and display space with a streamlined look. 24" deep counters can be paired in any configuration to fit your floor space.

Fixtures come in a range of preselected colors. Custom color combinations are available on request.



Example Configuration (Customer Side)



Example Configuration (Service Side)

Laminate color shown:
White, Natural Ash

Jumbo Register Stand Transaction Counter

FDCAN106

\$1,400

48"w x 42"h x 30"d

Simplify your transaction area with this all-in-one transaction counter that integrates register and storage space. Includes illuminated reveal and check signing ledge.

Can be used in multiples to make a row of counters, or as a stand alone.



Laminate color shown:
Black, Regency Mahogany



Laminate colors shown:
Natural Ash

Modular Wall Unit

FDCAN135

\$450

24"w x 96"h x 12"d

(Dimension of an assembled single unit)

This backless modular shelving system allows you to cover as much, or as little wall space as desired.

Each section has 5 adjustable shelves, a fixed shelf, and includes a customizable graphic header.



Laminate colors shown:
Walnut Riftwood



Laminate colors shown:
Wedding Cake

Lighted Modular Wall Showcase

FDCAN107

\$1,445

36"w x 96"h x 12"d

This locking perimeter display includes internal lighting to highlight product. Upper display has adjustable shelving, with two locking drawers below.

Lighted Modular Wall Showcase w/ Illuminated Header

FDCAN141

\$1,735

36"w x 96"h x 12"d

This locking perimeter display includes internal lighting to highlight product. The display has a customizable, illuminated snap frame header. Upper display has adjustable shelving, with two locking drawers below.



Secure Slat Wall Unit

FDCAN108

\$872

48"w x 48"h x 9.5"d

These locking displays utilize slat wall, so you can merchandise with either peg hooks, or the provided, adjustable acrylic shelves. Can accommodate up to a 6in peghook with glass doors closed.

Laminate colors shown:
White, Regency Mahogany



Shown with 2 slatwall units and optional acrylic slat wall shelves (see Accessories)



Decorative Shelf

8' Shelf (Double)

FDCAN109

\$340

96"w x 4"h x 16"d

4' Shelf (Single)

FDCAN110

\$230

96"w x 4"h x 16"d

8ft shelf can be added to a set of two displays for a cohesive look.

F Laminate color shown:
Wedding Cake[WC] frame, White slatwall

Laminate colors shown:
Wedding Cake, White



Tall Slat Wall Display

FDCAN111

\$1,370

48"w x 78"h x 9.5"d

This wall-mounted, locking slat wall display includes space for a customizable illuminated header. Can accommodate up to a 6in peghook with glass doors closed.

Laminate colors shown:
White, Regency Mahogany



Display Credenza

FDCAN112

\$895

48"w x 38"h x 18"d

This storage unit has 6 locking drawers, and works both behind your transaction counters or out on the sales floor. It can be grouped, or stand on its own.

Laminate colors shown:
White, Natural Ash



Slatwall Hutches for Credenzas

Open Front Hutch FDCAN113

\$959
48" w x 58" h x 14" d

Locking Glass Doors Hutch FDCAN180

\$1,214
48" w x 58" h x 14" d

Unit is designed to sit on top of the Display Credenza FDCAN112 sold separately. Glass Door Hutch can accommodate up to a 6in peghook with glass doors closed. The display has a customizable, illuminated snap frame header.

An option with locking glass doors is available for added security.

Shelves or peg hooks may be purchased separately.

Laminate colors shown:
Black, Chestnut Woodline

Laminate colors shown:
White, Wedding Cake



Single Credenza and Hutch
with Single Surround
(exploded view)



2 Credenzas and 2 Hutches
with Double Surround

Credenza Surround

Single FDCAN117

\$459

Double FDCAN118

\$609
1.5" Thickness

This surround can be added around single and double credenza groups for a unified look.

Typically in white, it can also be finished in a matching woodgrain.

Laminate colors shown:
White, Regency Mahogany

PERIMETER DISPLAYS



Credenza Upper Shelving Box Units

Open Center Box Unit FDCAN115

\$789
48"w x 36"h x 18"d

Horizontal Box Unit FDCAN169

\$895
48"w x 36"h x 18"d

These open shelving options allow for additional visual interest for items that do not need to be secured. Credenza sold separately.

Box Unit may also be wall mounted without the need for the Display Credenza below.

Laminate colors shown:
Black, Chestnut Woodline



Gondola Floor Display

FDCAN121

\$1,349
48"w x 48"h x 24"d

This open display is an excellent way to display open-access merchandise on your store floor.

Includes 4 glass shelves - 44" x 10".

Laminate colors shown:
Black, Wedding Cake

Double-Sided Floor Display

FDCAN120

\$1,250

48"w x 36"h x 18"d

This locking display case includes lower integrated storage, with ample vertical display space above. The glass display portion has locking, sliding doors on one side.

Laminate colors shown:
Regency Mahogany

Small Glass-Top Display

FDCAN122

\$1,175

24"w x 46"h x 24"d

These small-footprint glass-top displays include a locking slide-out display drawer, and metal support structure.

Laminate colors shown:
Black Riftwood

Two-Sided Glass Table

FDCAN124

\$1,669

48" w x 46"h x 28"d

This glass-enclosed display table features a metal support structure, and locking, slide-out storage drawers on each 48" side. A vertical panel divides the display area.

Laminate colors shown:
Chestnut Woodline



Flat Top Display Table

FDCAN174

\$1,365

66" w x 33.5"h x 30"d

Sleek flat top table with slotted surface to allow for more flexibility in merchandising and product security. Product pods and FAQ card holders not included.

Laminate colors shown:
Storm Gray, Wedding Cake



Two-Tier Display Table

FDCAN145

\$2,295

72" w x 40"h x 20"d

This open-top display table features two tiered levels, allowing you to maximize your products on display. Slotted surface to allow for more flexibility in merchandising and product security. Product pods and FAQ card holders not included.

Laminate colors shown:
Black, Walnut Riftwood



Three-Tier Display Table

FDCAN125

\$2,779

78"w x 47"h x 35"d

This open-top display table features three tiered levels, allowing you to maximize your products on display. Slotted surface to allow for more flexibility in merchandising and product security. Product pods and FAQ card holders not included.

Laminate colors shown:
Black, Black Riftwood



Glass-Top Display

FDCAN127

Metal Base

\$1,926

56"w x 45.5"h x 30"d

This multi-use display allows for both enclosed and interactive merchandising. The main countertop is 37.5"h with a single slot on each side for merchandising product and FAQ cards. The 8" raised central glass area allows for display of higher-value items.

The countertop slides out for access. Product pods not included.

Laminate colors shown:
Black, Regency Mahogany



Reception Counter

FDCAN128

\$1,890

72"w x 42"h x 24"d

Greet customers with a reception counter that also helps define waiting areas outside the sales space.

Work counter is 36" high.
Overall height is 42" high.

Laminate colors shown:
White, Natural Ash



Reception Counter

FDCAN132

\$2,050

72"w x 42"h x 24"d

Reception Counter with extended cabinet front and downlight illumination, has a 36" high worksurface. Includes two locking drawers and locking storage area in the base with adjustable shelf.

Laminate colors shown:
Black, Wedding Cake



Self Check-In Counter

FDCAN129

\$1,470

69"w x 38"h x 18"d

Allow customers to check themselves in when they arrive with this hands-free check-in counter.

Includes iPad mounts.

iPads are not included

Laminate colors shown:
White, Regency Mahogany



Glass Shelves

Full Width (46")

FDCANSHELF46 - \$76

Half Width (23")

FDCANSHELF24- \$66

Glass shelves for use on the upper credenza slat wall displays. Come in full-width, and half width sizes.



6" Chrome Peg Hook

9000588 - \$2.50 ea.



6" Black Peg Hook

9000158 - \$2.50 ea.



Custom Cut 3D Acrylic Wall Lettering

Surface applied logo cut out of 1/4" thick acrylic. White, black or clear acrylic can be colored via vinyl or direct print.

Call for pricing.



Custom Illuminated 3D Metal Wall Sign

48"w x 48"h x 3"d

This 3" profile metal wall sign mounts directly to the wall, and can be customized with your logo. Text and logo are push-through acrylic and illuminated from behind.

Call for pricing.



Custom Illuminated 3D Metal Wall Sign with Sconce-Lighting

This laser-cut metal wall sign mounts directly to the wall, and can be customized with your logo. Text and logo are illuminated, and the mounting system includes sconce lighting to surround the entire sign with a soft glow.

Call for pricing.

